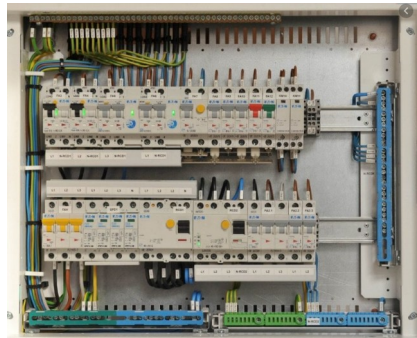


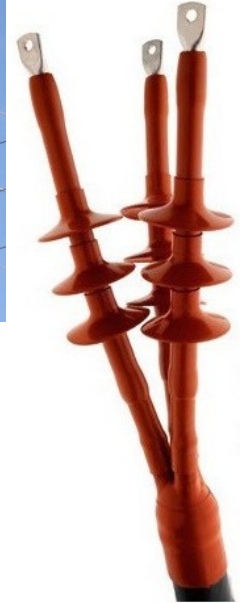
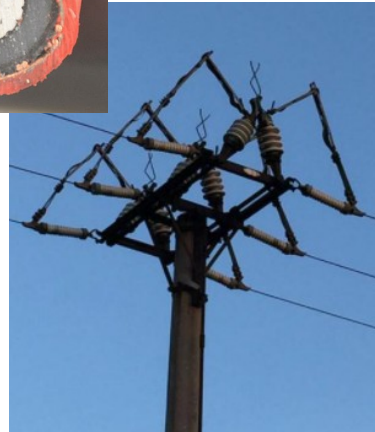
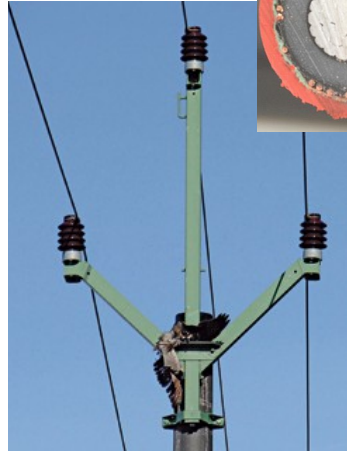
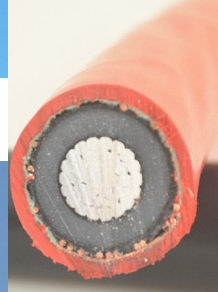
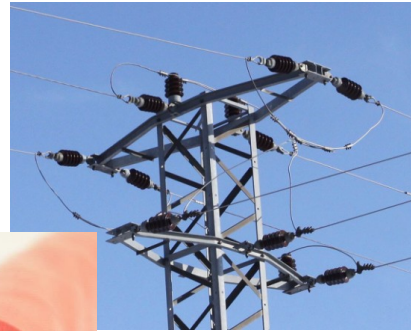
# Rozvody 230/400V



## Transformovny (trafostanice) 22/0,4 kV



## Vedení 22, nebo 35 kV



## Rozvodny/transformovny 110/22 kV



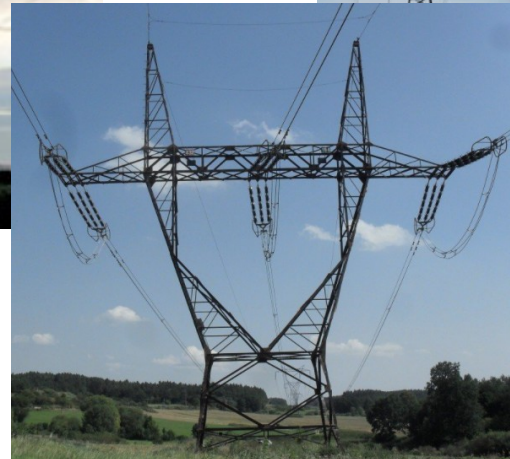
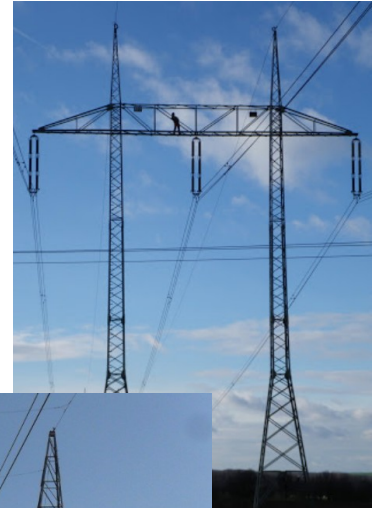
## Vedení 110 kV



## Rozvodny 110 kV



## Vedení 220 a 400 kV



# Rozvodny, transformovny, regulační transformátory 400 kV

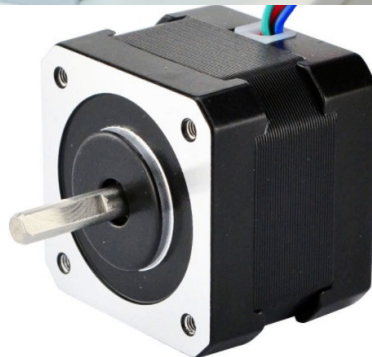
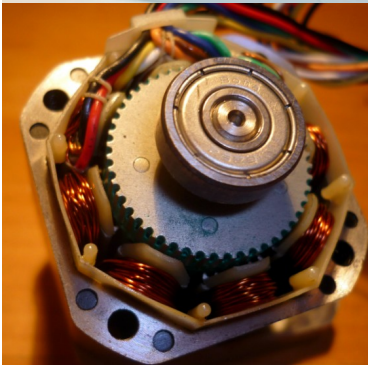
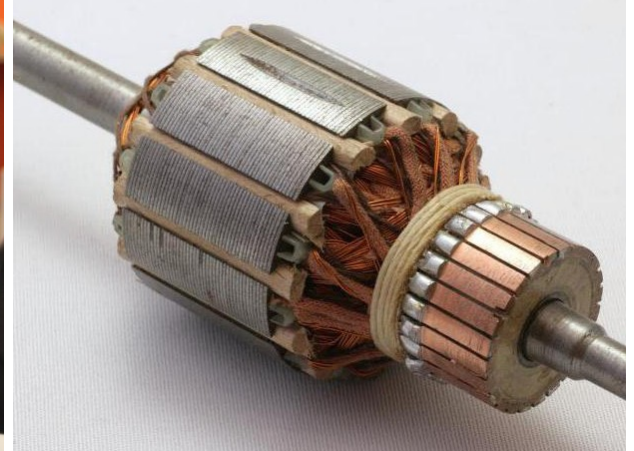
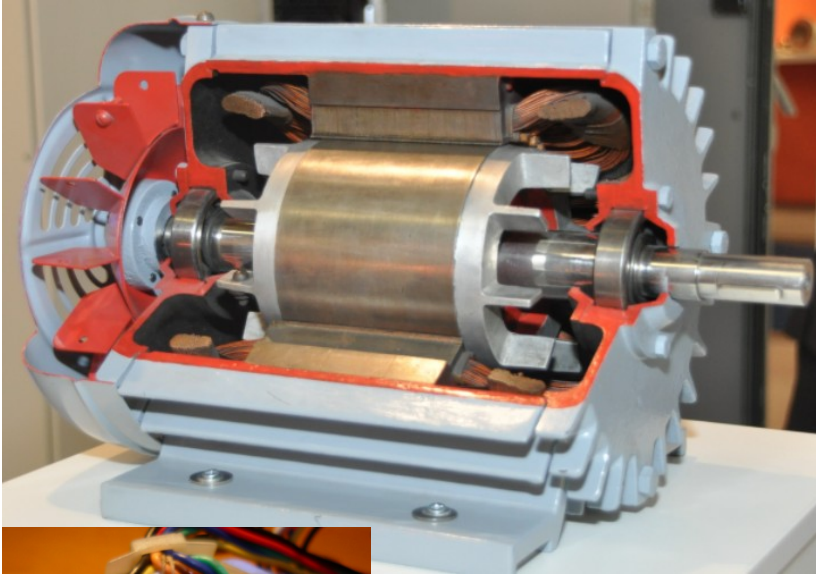




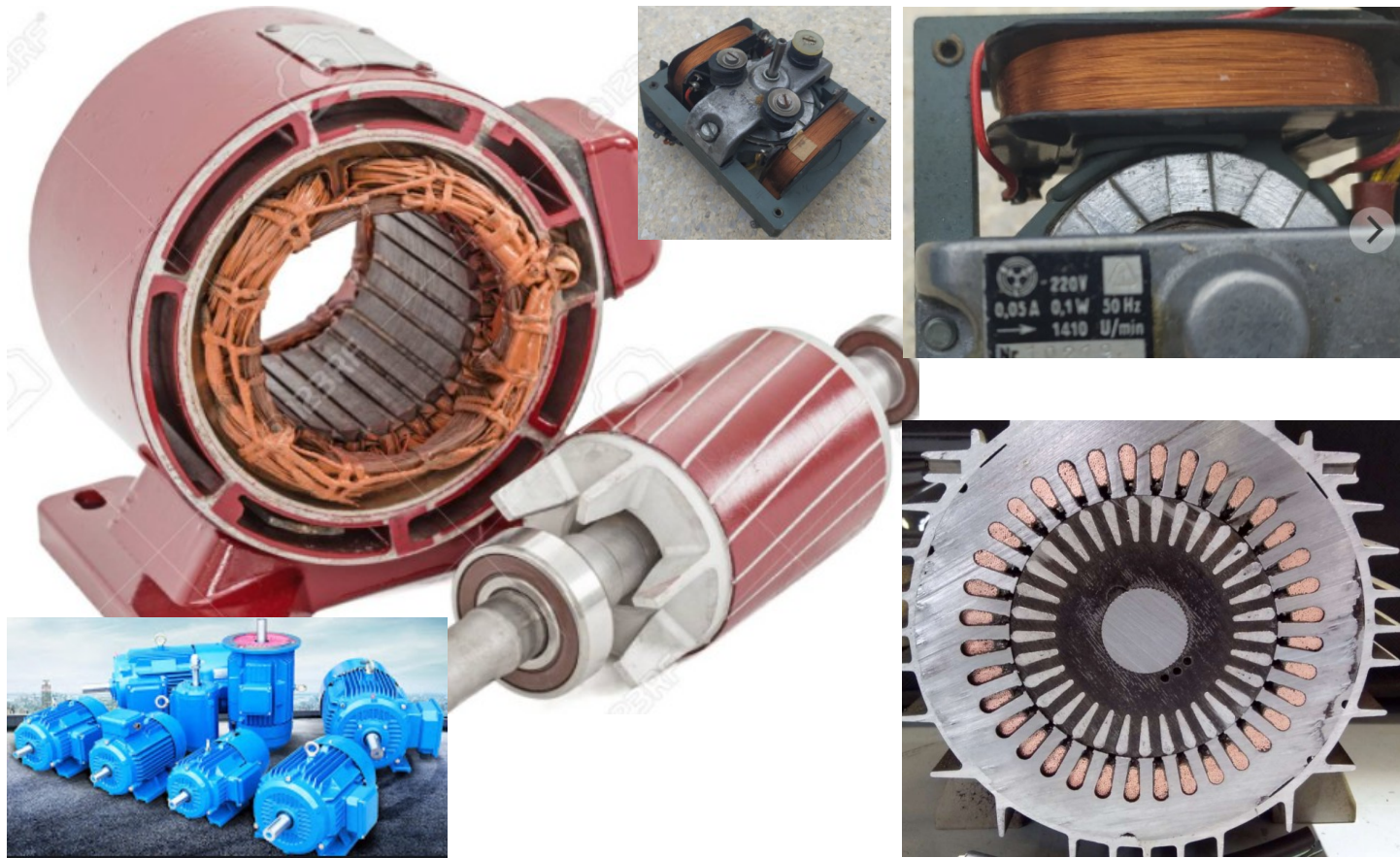
# Turbíny a generátory v elektrárnách



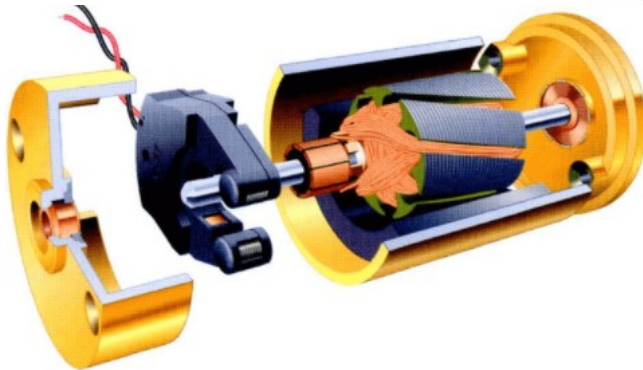
# Elektromotory střídavé



# Asynchronní motory



## Malé stejnosměrné motorky



## Modelářské a cyklistické motorky střídavé (BLDC)

